

# Residential & Small Business Generators



POWER YOU CONTROL

**GENERAC**<sup>®</sup>





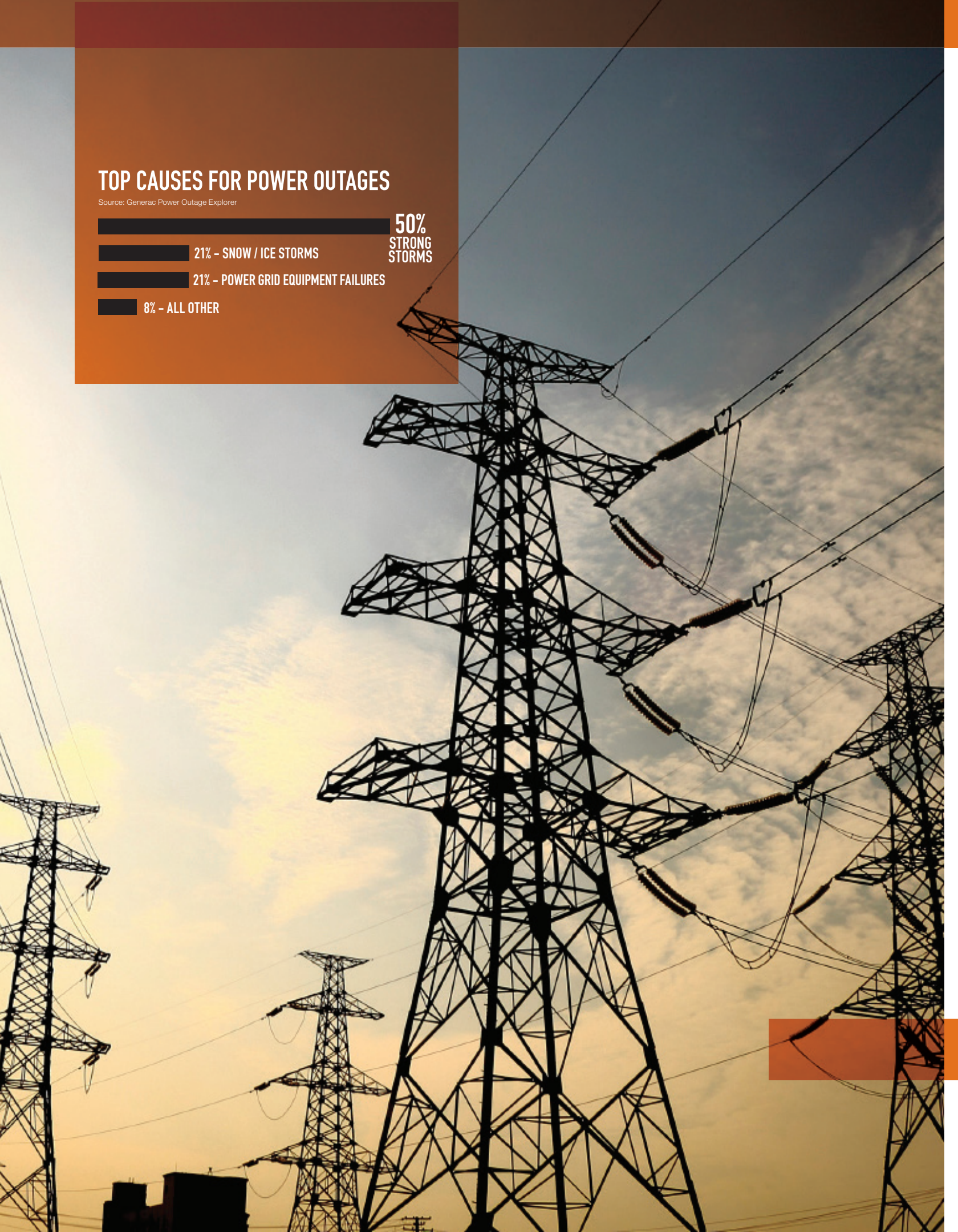
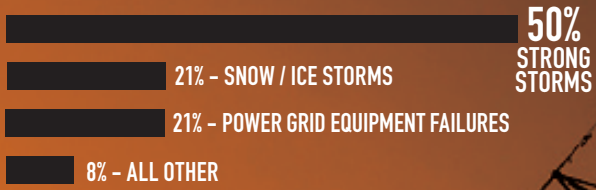
## Imagine your life **without** power?

- Refrigeration/freezer for food and medicines
- Furnace
- Air conditioning
- Lighting – inside and outside
- Clean water for drinking and bathing
- Sump pump
- Kitchen appliances
- Contact with the outside world; Internet, cell phone chargers, TV, radio and more
- Washing and drying clothes
- Security system
- Garage door opener
- Fans
- Medical equipment
- Charging power tools for use during the emergency and post-outage cleanup
- Monetary loss from temporary relocation, hotel costs, dining out, property damage, etc.

**GENERAC**<sup>®</sup>

# TOP CAUSES FOR POWER OUTAGES

Source: Generac Power Outage Explorer



# Power. Our lives depend on it

From essentials like heating, cooling and lights, to daily necessities like cooking, laundry and the kid's bath-time, our lives run on electricity. Unfortunately, our modern lifestyles are in ever-greater jeopardy; power outages are occurring more frequently than ever and lasting longer, with devastating effects. Protect your home and family with a Generac automatic standby generator and keep life going without disruption.

## The #1 choice in standby power

At Generac, we protect the things that power your life by providing quality, affordable power solutions. Since 1959, we've focused primarily on power generation, and we now offer more generator solutions than any other manufacturer. That heritage has helped make us the number one choice in residential standby power, chosen seven to one over the closest competition. When you choose Generac, you're choosing to have peace of mind and the power to live.

Mobile Link™ Remote Monitoring - The ONLY generator you can buy with Mobile Link. Generac's Mobile Link actively monitors your generator status on your smartphone, tablet, anywhere in the world, for free.

5-Year Limited Warranty for automatic standby generators.

Generac generators and engines are Engineered and Built in the USA\*  
*\*Assembled in the USA using domestic and foreign parts*

The Generac G-Force Engines are purpose-built, pressure-lubricated engines capable of handling the rigors of generator use, resulting in power that's more reliable and requiring less routine maintenance than any competitive engine.

**7 OUT-OF 10 HOMEOWNERS CHOOSE GENERAC**

Source: Frost & Sullivan, SBI, TraQline

24-7  
POWER  
PROTECTION



**POWER**  
YOU CONTROL

AUTOMATIC STANDBY GENERATORS

When inclement winter weather left Greg and Ellen's family without power for five straight days, they knew they had to do something to keep their home and family protected from the negative effects of extreme cold.

"We're always one of the last neighborhoods to have our power restored. So, after that last storm... we invested in a Generac generator.  
We always have power now."

REAL  
GENERAC  
OWNER

-Greg & Ellen L.

POWER  
YOU CONTROL

THE | GENERAC  
PROMISE



\* Built in the USA using domestic and foreign parts.

The Generac Promise means that our 9–22 kilowatt Guardian® Series home backup generators will give you peace of mind and the power to live. It means that we engineer and build them here in America\*. It means we stand behind them with a strong 5-year limited warranty. We promise to continue to innovate, like our Mobile Link™ monitoring system, so you'll know the status of your generator, no matter where you are. And if you ever need to call, we're standing by 24/7, every minute of every day, ready to pick up the phone right here in Wisconsin.

Reliable. Dependable. We promise.

# This is how a generator **works**

## **1** Utility power is lost.

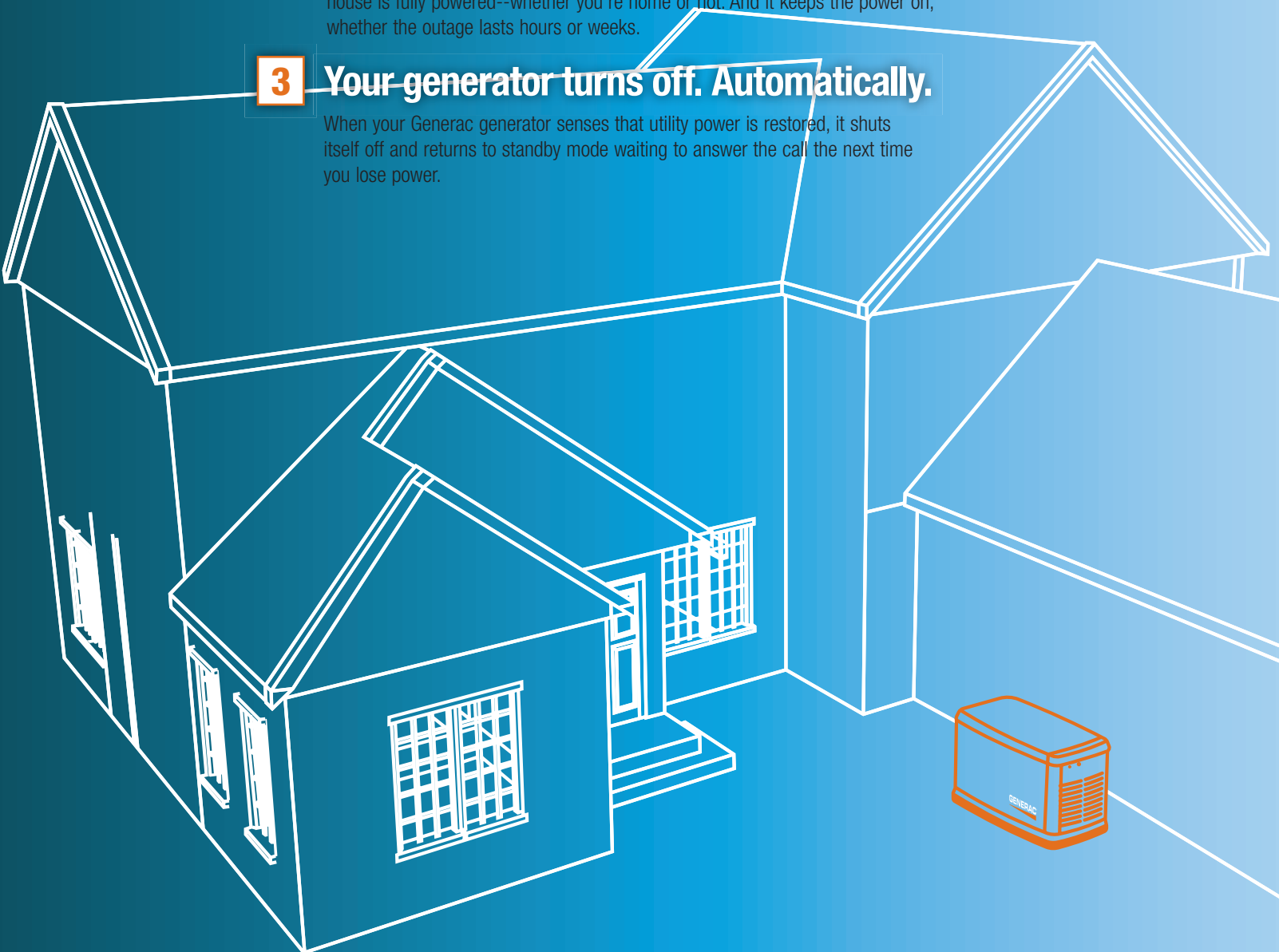
Maybe it's a storm. Maybe a grid failure. Maybe one of those cyberterrorists finally broke through. Whatever the cause, the power is out and you need a solution.

## **2** Your generator turns on. Automatically.

Within seconds, your Generac generator senses the problem, turns on, and your house is fully powered--whether you're home or not. And it keeps the power on, whether the outage lasts hours or weeks.

## **3** Your generator turns off. Automatically.

When your Generac generator senses that utility power is restored, it shuts itself off and returns to standby mode waiting to answer the call the next time you lose power.





“MY FAMILY’S GOING TO BE SAFE AND SECURE  
IN MY HOUSE BECAUSE OF THIS GENERATOR.”

- Greg Beappler

## Sizing a generator is based on **your needs**

By sizing your generator according to your needs instead of your home’s square footage, you won’t overspend or be surprised by inadequate coverage. Generac has the solution; essential circuit coverage for the basics, managed whole-house for average coverage, and true whole-house coverage to protect it all.

### How much power do you need?

With the broadest product line in the industry, Generac ensures the best possible backup power system for every homeowner, and one that is right for you.



Essential Circuit Coverage



Managed Whole-house



Complete Whole-house

#### Essential Circuit Coverage

#### **ECONOMICAL SOLUTIONS COVER THE BASICS.**

Many homeowners choose to cover only their essential circuits during an outage. Choose from options that create a simple, economical solution that keeps basics covered during an emergency.

#### Managed Whole-House

#### **POWER MANAGEMENT GAINS MORE COVERAGE FROM A SMALLER GENERATOR.**

Gain up to whole-house coverage through smart power management. If it is unlikely you will turn on every appliance at the same time (most people don’t), a smaller generator paired with a Generac power-management switch provides whole-house coverage through a managed power solution by managing the power requirements of individual appliances.

#### Complete Whole-House

#### **WHEN THE POWER GOES OUT, EVERYTHING COMES ON AND STAYS ON.**

Generac’s full line of backup power solutions includes larger generators capable of covering every circuit in any size home for complete whole-house protection. Never wait for an appliance to take its turn being powered. When the power goes out, everything goes on and stays on — no matter how many circuits need to be backed up.

“ I DON'T HAVE TO DO ANYTHING, IT'S GREAT. ”

- Jerald Grupp



## Generac offers a wide range of sizes

Consumers choose Generac automatic generators not only for their proven reliability, but for the innovative features, engineered with home and business owners in mind.

### PowerPact™ 7.5 kW unit



Generac's 7.5 kW Powerpact home standby generator is the affordable, automatic alternative to portable backup power. Features incorporate the quality and reliability of the best selling Guardian Series, while remaining the most affordable home standby generator available. Runs on LP or natural gas.

- Prepackaged system available with a 50 Amp transfer switch featuring an eight circuit load center including breakers
- Generac OHV engine is designed for reliability and long life
- True Power™ technology provides clean, smooth operation of sensitive electronics and appliances



### Guardian Series® 9–22 kW units



Generac's Guardian Series offers a wide range of solutions, so you can get the level of coverage that is appropriate to your needs. Choose from a pre-packaged system or have your dealer or contractor help design the best system for you.

- Mobile Link Remote Monitoring - The ONLY generator you can buy with Mobile Link  
Generac's Mobile Link actively monitors your generator status on your smartphone, tablet, anywhere in the world, for free
- 5 Year Limited Warranty for automatic standby generators
- Generac Generators and engines are Engineered and Built in the USA\*  
\*Assembled in the USA using domestic and foreign parts
- The Generac G-Force Engine is purpose-built, pressure-lubricated engine capable of handling the rigors of generator use, resulting in power that's more reliable and requiring less routine maintenance than any competitive engine
- 24/7/365 Customer Support Team standing by all-day every-day from our headquarters in Wisconsin to answer any questions you might have



### Synergy 20 kW unit



Protect your home with the industry's most advanced back-up power technology. The Generac Synergy™ automatic home standby generator delivers cleaner power than competitive units, our G-Flex™ Technology allows variable-speed operation based on your electrical demand.

- 5 Year Limited Warranty for automatic standby generators.
- Generac Generators and engines are Engineered and Built in the USA\*  
\*Assembled in the USA using domestic and foreign parts
- The Generac G-Force Engine is purpose-built, pressure-lubricated engine capable of handling the rigors of generator use, resulting in power that's more reliable and requiring less routine maintenance than any competitive engine.



### EcoGen 15 kW unit



Generac offers the only automatic standby generator engineered specifically for off-grid applications. The EcoGen eliminates the expense and unreliability previously associated with alternative energy backup power options, instead providing affordable, reliable, low emission, off-grid standby power.

- Engineered to easily integrate into the existing inverter and battery storage system
- Runs on environmentally friendly, energy-efficient propane gas, an alternative fuel that stores easily and indefinitely, and is freely available at many off-grid locations



# Tough. Reliable. Purpose-Built.

Generators are often required to run for hours, days or even weeks at a time. Continuous use can cause a lot of strain on engines not specifically engineered to withstand extended run times. We have developed robust engine solutions to ensure our generators provide the reliability necessary to power through even the most demanding situations.



## 5-Year Limited Warranty

For all automatic standby generators.



## True Power™ Technology

Delivers best-in-class power quality with less than 5 percent total harmonic distortion for clean, smooth operation of sensitive electronics and appliances.



## Built in the USA

Generac Generators and engines are engineered and Built in the USA\*  
*\*Assembled in the USA using domestic and foreign parts.*



## 24/7/365 Customer Support Team

Standing by all-day every-day from our headquarters in Wisconsin to answer any questions you might have.



## Quiet-Test™ Self-Test Mode

Runs at a lower RPM for a five or twelve minute test, is significantly quieter than other brands, and consumes less fuel. (16–22 kW only)

When the hurricane knocked out utility power, Jimmy's family was forced to wait out the storm without electricity or the protection of their home security system. To ensure this never happened again, Jimmy decided to purchase an automatic standby generator from Generac.

"The lights went out, and we had nothing. I said to myself that I was never going to live that way again. Now that we have a Generac generator, our life has become easier."

**REAL  
GENERAC  
OWNER**

**-Jimmy M.**

**POWER**  
YOU CONTROL



# Mobile Link Remote Monitoring

Allows you to monitor the status of your generator from anywhere in the world using a smartphone, tablet, or PC. Easily access information, such as the current operating status and maintenance alerts. Connect your account to your authorized service dealer for fast, friendly and proactive service. With Mobile Link, you are taken care of before the next power outage.



## Tough, Durable Enclosures

Sturdy all weather enclosures made from corrosion-resistant aluminum.



## Smart, User-friendly Controls.

Generac's Evolution™ Controller features a dual-line, multilingual LCD display allowing for easy monitoring of history and maintenance logs and manage your generator.



## Generac's G-Force Engine

Purpose-built for the rigors of power generation. It also requires fewer scheduled maintenance checkups than some competitor's engines, and provides the reliability you need for the long run-times that emergency backup can require.



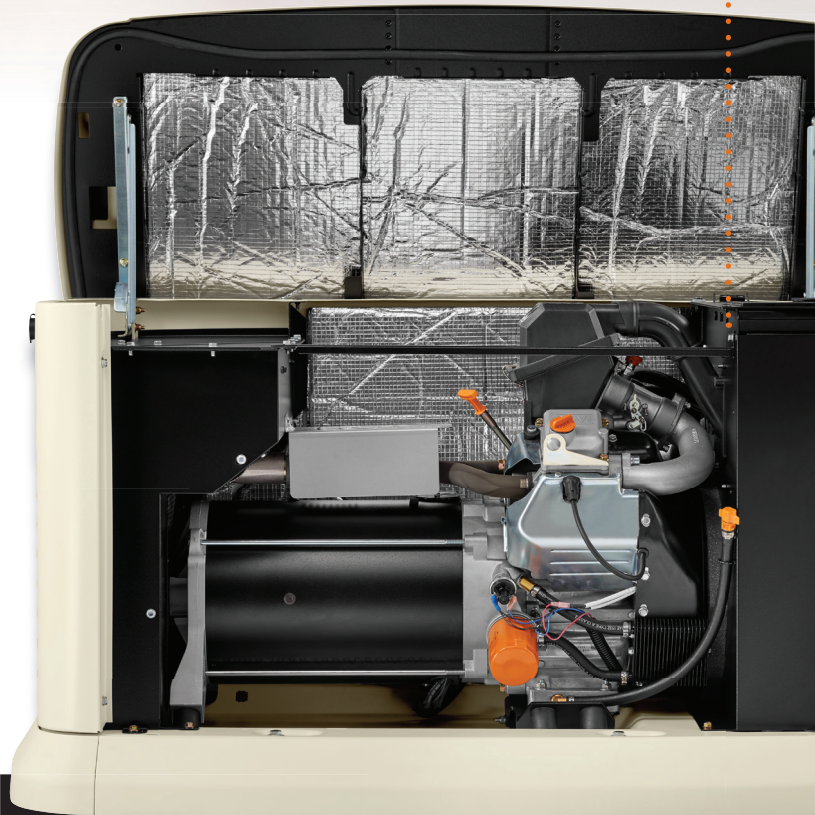
## Intelligent and Affordable

DPM™ Technology intelligently manages household loads for a more affordable standby solution. *(Available on 11 kW and larger units bundled with a 200 Amp transfer switches).*



## Convenient Installation

Certified for optimal placement 18" away from a building.



# When more power is needed

As the world's #1 manufacturer of home standby systems, Generac identified and responded to the need for affordable, higher kW units for larger residences and smaller businesses. Through innovative engineering, Generac has eliminated the noise, cost, and environmental issues that once made standby power impractical for these applications. When more power is necessary, install a quiet, clean and affordable solution from Generac.

## Protector Series Diesel – 15, 20, 30, 48/50 kW

Generac's Protector Series diesel units raise the bar for residential and light commercial diesel generators. Building and zoning codes can vary greatly from one region to another. In the past, the only answer was to order expensive, custom-configured solutions. Until now.

To address the variances in code, Generac's diesel-powered Protector Series is the only automatic standby generator to feature Code Ready, a set of common options that are preconfigured to ensure that the generator will be adaptable to a variety of municipal codes. A wide range of code-driven accessories are available to address any further code conformance requirements.

- External vent and fill
- UL 142 / ULC SG01-listed, double-walled base tank
- UL/CUL 2200-listed generator
- Aluminum, weather-resistant enclosures
- Larger tank options available for extended run times



## Protector Series – Gaseous 25, 30, 36, 45 and 60 kW

The higher kW nodes of Generac's Protector Series are ideal for larger homes and small-to-medium-size businesses such as convenience stores, restaurants and offices.

- Continuous fuel choices in LP and natural gas offer cleaner-burning fuel solutions than traditional diesel engines
- True Power Technology delivers best-in-class power quality with less than 5% total harmonic distortion for clean, smooth operation of sensitive electronics and appliances



## Protector Series QuietSource (QS) – Gaseous 22, 27, 32, 38 and 48 kW

Premium features are standard on the ultimate residential standby generator. For homeowners with larger residences, these units are powered by a low-speed engine for extra-quiet operation and come standard with an aluminum enclosure. QuietSource generators also include all the features of the Protector Series 25-60 kW.

- The low-speed, liquid cooled engine is engineered to run at only 1800 RPM for a substantially quieter generator, consuming less fuel, and giving both the engine and the alternator a longer life
- Ideal for homes requiring higher kW backup for amenities such as additional living areas, garages, and air conditioners, pools, greenhouses, guest homes, mother-in-law suites, medical needs and more



### Ideal Industries/Applications:

GROCERY STORES & GAS STATIONS  
SMALL OUT PATIENT CLINICS  
SCHOOL OFFICE & DISTRICT BUILDINGS  
BANKS & FINANCIAL INSTITUTIONS  
MANUFACTURING INDUSTRIES & DISTRIBUTORS

RESTAURANTS & BARS  
GARAGES & AIR CONDITIONERS  
GUEST HOMES  
GREEN HOUSES  
GENERAL CONTRACTOR FACILITIES  
FARM & AGRICULTURE

*Need single or three-phase options up to 150 kW? Ask your dealer about Generac's commercial generators.*



“ MY BUSINESS ACTUALLY MAKES  
MORE MONEY  
DURING A POWER OUTAGE . . . I'M THE  
ONLY PLACE OPEN! ”

- Steven Beck



# Transfer switches

Because Generac understands the transfer switch is the core of the generator system, we offer more options than any other manufacturer to ensure coverage requirements are met. All switches are UL listed.

## Power Just the Basics



Some homeowners prefer a simple, economical approach. Essential coverage protects only your most important circuits — such as lights, furnace, water heater, refrigerator/freezer and sump pump.

Finding the generator that's right for you depends on your needs and your budget — not just your square footage. Generac offers the broadest line of home standby generators in the industry. So we can help you find the perfect match to protect your home.

### Pre-wired, Limited Circuit Switches

Generac's Pre-Wired Switch is an automatic transfer switch and distributed load center that backs up selected circuits for essential circuit coverage. Pre-wired for the easiest and least expensive installation on the market, they are an excellent value when whole house coverage is unnecessary.

### GenReady

Generac's 200 amp GenReady Panel serves as a replacement to your home's main panel, as well as the transfer switch needed for automatic operation. This solution features a 40-circuit capacity when tandem breakers are properly utilized. Ideal for new home construction, or electrical service upgrades, this switch is a space saver, and can be used with systems up to 30kW in size.

### 100 Amp, NEMA 3R, 16 Circuit Switch

Generac's limited circuit automatic transfer switches are a great option for homes where the electrical panel is located outside. These switches are compatible with breakers manufactured by Eaton, Siemens or Squared D; with the use of tandem breakers, these switches can be expanded to 24 circuits.

### 100-800 Amp, Non-service Rated, NEMA 3R Switches

If your personal application and backup power needs require a custom-built sub panel, Generac's non-service rated automatic transfer switches provide an option for both indoor and outdoor installation. When a limited circuit switch, and/or the combination of breakers on an alternative switch are insufficient, utilize these models.



## Power Where You Need it



Whole-house coverage may not fit every budget. With a power management system, your generator can work smarter. It protects all your home's circuits by cycling power on and off as needed for different appliances. And you decide what gets priority.

A Generac power management system protects all the circuits in your home — without the higher cost of whole-house coverage.

Chances are you won't need to turn on every appliance at the same time during an outage. (Most people don't.) Generac power management systems monitor power needs throughout your house — automatically cycling power on and off where it's needed.

The way it works is simple. You decide which circuits are most essential to your home. Whenever the generator approaches its power limit, the system turns off non-essential circuits to prevent an overload. Once essential circuits are satisfied, it cycles non-essential circuits back on.

## Power it All, All The Time



Most homeowners want the peace of mind that comes with whole-house coverage. Whenever there's an outage, you don't have to worry — because the power stays on at all times throughout your entire home.

A Generac whole-house power system backs up every electrical circuit in your home whenever the power goes out.

There's no waiting for an appliance to take its turn being powered — everything comes on and stays on. So you don't have to decide which circuits are most important. They'll all be available, automatically, around the clock.

The full line of Generac whole-house power systems includes larger generators and transfer switches capable of covering every circuit in any size home. It's a comprehensive approach for complete peace of mind.

### 100-400 Amp Service-Rated

Generac's service rated automatic transfer switches offer whole-house coverage for your back-up power needs. Featuring a NEMA 3R enclosure, these particular switches can be installed either indoors or outdoors.

### 100-800 Amp Non-Service Rated

Generac's non-service rated automatic transfer switches enable full-circuit coverage, when an additional main disconnect is properly installed in the field. Featuring a NEMA 3R enclosure, these particular switches can be installed either indoors or outdoors.

### 100-200 Amp CUL Service-Rated

CSA models are approved for use in Canada. Featuring a NEMA 3R enclosure, these particular switches can be installed either indoors or outdoors.

### 100-200 Amp GenReady™ Whole House Service Equipment Rated Transfer Switch

This panel integrates a main breaker, transfer switch, and load center. Comes in 24 space, 40 Circuit and 42 space, 60 Circuit options.

### 200 Amp Service Rated with Integrated Load Center

The 200 amp open transition switch is a single phase service entrance rated configuration with 8 Circuit Load Center.

## Smart Management Module

Meet the brains that make smart power possible. These modules are essential to a Generac power management system. They work with your transfer switch, monitoring each selected circuit and automatically supplying power where it's needed so you can get the most from your generator.



A Generac power management system can use up to eight individual Smart Management Modules, depending on your needs. Just as important, you can set the load priority for each — putting you in control of which circuits matter most.



## Mobile Link remote monitoring

Allows you to monitor the status of your generator from anywhere in the world using a smartphone, tablet, or PC. Easily access information, such as the current operating status and maintenance alerts. Connect your account to your authorized service dealer for fast, friendly and proactive service. With Mobile Link, you are taken care of before the next power outage.

### What Mobile Link can do for you?

- Mobile Link Remote Monitoring FREE with every Guardian Series home standby generator
- Gives you peace of mind, always having access to your generator's current status.
- View current generator status and status of scheduled self-test
- View your generators detailed status history, including prior run performance and maintenance history.
- Receive system notifications regarding needed maintenance, including battery status or any fault conditions.
- Weather status updates
- Give you the ability to link your generator to a Generac authorized service dealer for targeted and expedited service.

### How it works

# 1

Generator experiences a change in status (either running, fault or maintenance alert)

# 2

Mobile Link sends the update to MobileLinkGen.com, notification is sent in the form of email, text messages or Push Notifications to any smart device - automatically. (depending on service level)

# 3

Customer receives notification and can reach out to their authorized service dealer for support OR Generac authorized Service dealer receives push notification and proactively works with customers on any needed service.

**Various service levels are available. Visit [MobileLinkGen.com](http://MobileLinkGen.com) for more details.**



“MY FAMILY'S GOING TO BE SAFE AND SECURE  
IN MY HOUSE BECAUSE OF THIS GENERATOR.”

- Greg Beappler

## Accessories



### Cold Weather Kit

If the temperature falls below 0° F, install a cold weather kit to maintain optimal battery and engine oil temperature. Kit contains a thermostat-controlled battery pad and engine-block warmer.



### Scheduled Maintenance Kits

A scheduled maintenance program ensures the generator system is always in top operating condition and warranty requirements are being met. Generac's scheduled maintenance kits provide all the hardware necessary to perform complete routine maintenance on a Generac automatic standby generator. Oil must be purchased separately based upon manufacturer recommendations listed below. Maintenance is recommended at every 200 hours or 2 years.

Kit contents may vary by model. Kits Include:

- Air Filter
- Oil Filter
- Spark Plugs
- Oil Funnel
- Chamois
- Reminder Sticker



### Extended Warranty

Up to five years extended warranty coverage available through Generac Industrial and Residential/Commercial Dealers, on generators ranging from 9 to 150 kW (7 and 10 year options available).

**For more accessories, visit [Generac.com](http://Generac.com)**

# Specifications

Enhance your Generac standby generator's performance with accessories from the leader in standby power. Products are available to maximize convenience and simplify maintenance for years of reliable standby power.

## Automatic Standby Generators - Air-Cooled

|   | PowerPact      |                | Guardian Series |                 |                 |                 | Synergy   EcoGen |                          |
|---|----------------|----------------|-----------------|-----------------|-----------------|-----------------|------------------|--------------------------|
| Pre-packaged models                                     | 6998 / 6999    | 7030           | 7032            | 7036            | 7039            | 7043            | 7040             | N/A                      |
| Non pre-packaged models                                 | N/A            | 7029           | 7031            | 7035            | 7038            | 7042            | N/A              | 7163                     |
| Rated Power (LPG/NG)                                    | 7.5 / 6 kW     | 9 / 8 kW       | 11 / 10 kW      | 16 / 16 kW      | 20 / 18 kW      | 22/19.5 kW      | 20/18 kW         | 15 / 15 kW               |
| Voltage (Single Phase)                                  | 240V           | 240V           | 240V            | 240V            | 240V            | 240V            | 240V             | 240V                     |
| Amps @ 240V LPG   | 31.25          | 33.3           | 45.8            | 66.6            | 83.3            | 91.6            | 83.3             | 62.5                     |
| Amps @ 240V NG  | 25.0           | 29.2           | 41.7            | 66.6            | 75              | 781.25          | 75               | 62.5                     |
| Engine/Alternator RPM                                   | 3600 / 3600    | 3600 / 3600    | 3600 / 3600     | 3600 / 3600     | 3600 / 3600     | 3600 / 3600     | 2700-3600        | 3600                     |
| Engine  | OHV / 420cc    | G-Force / 426c | G-Force / 530cc | G-Force / 999cc | G-Force / 999cc | G-Force / 999cc | G-Force / 999cc  | G-Force / 999cc          |
| Fuel Consumption @ full load<br>LPG cu. ft/hr (gal. hr) | 51.6 (1.42)    | 51.6 (1.42)    | 70 (1.92)       | 130 (3.57)      | 140 (3.85)      | 133 (3.68)      | 116 (3.19)       | 116 (3.19)               |
| Fuel Consumption @ Full Load<br>NG cu. ft/hr (gal. hr)  | 117            | 120            | 159             | 309             | 301             | 310             | 312              | 312 (8.83)               |
| Quiet-Test Mode   | No             | No             | No              | Yes             | Yes             | Yes             | Yes              | No                       |
| db(A) at Exercise                                       | 69             | 62             | 63              | 60              | 60              | 58              | 57               | N/A                      |
| db(A) at Normal Operating Load                          | 67             | 62             | 63              | 66              | 66              | 67              | 63               | 63                       |
| Automatic Transfer Switch                               | 50 Amp         | 100 Amp        | 200 Amp         | 200 Amp         | 200 Amp         | 200 Amp         | 200 Amp          | NA                       |
| Circuits Included                                       | 8              | 16             | 0               | 0               | 0               | 0               | 0                | N/A                      |
| Enclosure   | Aluminum       | Aluminum       | Aluminum        | Aluminum        | Aluminum        | Aluminum        | Aluminum         | Aluminum                 |
| Enclosure Color   | Bisque         | Bisque         | Bisque          | Bisque          | Bisque          | Bisque          | Bisque           | Bisque                   |
| Warranty  | 3 Year Limited | 5 Year Limited | 5 Year Limited  | 5 Year Limited  | 5 Year Limited  | 5 Year Limited  | 5-Year Limited   | 3-Year 2000 Hour Limited |
| Dimensions (L" x W" x H")                               | 36 x 27 x 25   | 48 x 25 x 29   | 48 x 25 x 29    | 48 x 25 x 29    | 48 x 25 x 29    | 48 x 25 x 29    | 48 x 25 x 29     | 48 x 25 x 29             |
| Generator Weight (lbs.)                                 | 280            | 360            | 407             | 471             | 451             | 476             | 471              | 526                      |
| CARB Compliant  | Yes            | Yes            | Yes             | Yes             | Yes             | Yes             | Yes              | Yes                      |

\* Rating definitions - Standby: Applicable for supplying emergency power for the duration of the charging period. No overload capability is available for this rating. (All ratings in accordance with BS5514, ISO3046 and DIN6271). \* Maximum wattage and current are subject to and limited by such factors as fuel Btu content, ambient temperature, altitude, engine power and condition, etc. Maximum power decreases about 3.5 percent for each 1,000 feet above sea level; and also will decrease about 1 percent for each 12° C (10° F) above 15.5° C (60°F). Not for sale in California.

## Automatic Standby Generators - Protector Series Liquid Cooled

| Model Number  | RG02515ANAX        | RG03015ANAX        | RG03624ANAX      | RG04524ANAX      | RG04524ANAC      | RG06024ANAX      | RG06024AVAX      |
|---|--------------------|--------------------|------------------|------------------|------------------|------------------|------------------|
| Rated Power (LPG/NG)                                  | 25/25 kW           | 30/30 kW           | 36/36 kW         | 45/45 kW         | 45/45 kW         | 60/60 kW         | 60/60 kW         |
| Voltage (Single Phase)                                | 240V               | 240V               | 240V             | 240V             | 240V             | 240V             | 240V             |
| Amps @ 240V LPG                                       | 104                | 125                | 125              | 188              | 188              | N/A              | 250              |
| Amps @ 240V NG  | 104                | 125                | 150              | 188              | 188              | 250              | N/A              |
| Engine/Alternator RPM                                 | 3600               | 3600               | 3600             | 3600             | 3600             | 3600             | 3600             |
| Engine  | In-line 4-Cyl.     | In-line 4-Cyl.     | In-line 4-Cyl.   | In-line 4-Cyl.   | In-line 4-Cyl.   | In-line 4-Cyl.   | In-line 4-Cyl.   |
| Fuel Consumption @ full load - LPG cu. ft/hr (gal/hr) | 75 (2.1)           | 75 (2.1)           | 231 (6.4)        | 310 (8.6)        | 310 (8.6)        | N/A              | 400 (11)         |
| Fuel Consumption @ full load - NG cu. ft/hr           | 221                | 221                | 626              | 836              | 836              | 1051             | N/A              |
| Quiet-Test Mode                                       | Yes                | Yes                | Yes              | Yes              | Yes              | Yes              | Yes              |
| db(A) at Exercise                                     | 59                 | 59                 | 61               | 61               | 61               | 65               | 65               |
| db(A) at Normal Operating Load                        | 72                 | 73                 | 70               | 73               | 73               | 72               | 72               |
| Automatic Transfer Switch                             | Not Included       | Not Included       | Not Included     | Not Included     | Not Included     | Not Included     | Not Included     |
| Enclosure   | Aluminum           | Aluminum           | Aluminum         | Aluminum         | Aluminum         | Aluminum         | Aluminum         |
| Enclosure Color                                       | Bisque             | Bisque             | Bisque           | Bisque           | Bisque           | Bisque           | Bisque           |
| Warranty  | 5 Year Limited     | 5 Year Limited     | 5-Year Limited   | 5 Year Limited   | 5 Year Limited   | 5 Year Limited   | 5 Year Limited   |
| Dimensions (L" x W" x H")                             | 62.2 x 30.6 x 38.5 | 62.2 x 30.6 x 38.5 | 76.8 x 35 x 46.1 | 76.8 x 35 x 46.1 | 76.8 x 35 x 46.1 | 76.8 x 35 x 46.1 | 76.8 x 35 x 46.1 |
| Generator Weight (lbs.)                               | 777                | 807                | 1202             | 1260             | 1260             | 1230             | 1230             |
| SCAQMD Model  | •                  | •                  |                  |                  | •                |                  |                  |

## Automatic Standby Generators - Protector Series Liquid Cooled (Quiet Source)

| Model Number  | RG02224ANAX        | RG02724ANAX        | RG03224ANAX      | RG03824ANAX      | RG04842ANAX      | RG04842ANAC      |
|---|--------------------|--------------------|------------------|------------------|------------------|------------------|
| Rated Power (LPG/NG)                                  | 22/22 kW           | 27/25 kW           | 32/32 kW         | 38/38 kW         | 48/48 kW         | 48/48 kW         |
| Voltage (Single Phase)                                | 240V               | 240V               | 240V             | 240V             | 240V             | 240V             |
| Amps @ 240V LPG                                       | 92                 | 113                | 133              | 158              | 200              | 200              |
| Amps @ 240V NG  | 92                 | 104                | 133              | 158              | 200              | 200              |
| Engine/Alternator RPM                                 | 1800               | 1800               | 1800             | 1800             | 1800             | 1800             |
| Engine  | In-line 4-Cyl.     | In-line 4-Cyl.     | In-line 4-Cyl.   | In-line 4-Cyl.   | V-8              | V-8              |
| Fuel Consumption @ full load - LPG cu. ft/hr (gal/hr) | 130 (3.6)          | 149 (4.1)          | 166 (4.6)        | 192 (5.4)        | 312 (8.7)        | 312 (8.7)        |
| Fuel Consumption @ full load - NG cu. ft/hr           | 342                | 396                | 380.6            | 444              | 638              | 638              |
| Quiet-Test Mode                                       | Yes                | Yes                | Yes              | Yes              | Yes              | Yes              |
| db(A) at Exercise                                     | 61                 | 62                 | 58               | 58               | 60               | 60               |
| db(A) at Normal Operating Load                        | 70                 | 75                 | 64               | 64               | 65               | 65               |
| Automatic Transfer Switch                             | Not Included       | Not Included       | Not Included     | Not Included     | Not Included     | Not Included     |
| Enclosure   | Aluminum           | Aluminum           | Aluminum         | Aluminum         | Aluminum         | Aluminum         |
| Enclosure Color                                       | Bisque             | Bisque             | Bisque           | Bisque           | Bisque           | Bisque           |
| Warranty  | 5 Year Limited     | 5 Year Limited     | 5 Year Limited   | 5-Year Limited   | 5 Year Limited   | 5 Year Limited   |
| Dimensions (L" x W" x H")                             | 62.2 x 30.6 x 38.6 | 62.2 x 30.6 x 38.6 | 76.8 x 35 x 46.1 | 76.8 x 35 x 46.1 | 76.8 x 35 x 46.1 | 76.8 x 35 x 46.1 |
| Generator Weight (lbs.)                               | 905                | 940                | 1235             | 1235             | 1555             | 1555             |
| SCAQMD Model  | •                  | •                  |                  |                  |                  | •                |

\*Units not designated as meeting South Coast Air Quality Management District (SCAQMD) emission requirements are not available for sale in CA or MA.

## Protector Series Generators - Diesel

| 60 Hz Model   | RD015          | RD020          | RD030          | RD048*/RD050   |
|---|----------------|----------------|----------------|----------------|
| Rated Power   | 15 kW          | 20 kW          | 30 kW          | 48 / 50 kW     |
| Engine Alternator RPM                               | 1800           | 1800           | 1800           | 1800           |
| Engine Manufacturer Line                            | In-line 4-Cyl. | In-line 4-Cyl. | In-line 4-Cyl. | In-line 4-Cyl. |
| Fuel Type   | Diesel         | Diesel         | Diesel         | Diesel         |
| Output Amperage 120/240 V, 1 $\phi$ 1.0 pf          | 62             | 83             | 125            | 200            |
| Output Amperage 120/208 V, 3 $\phi$ 0.8 pf          | 52             | 69             | 104            | 173            |
| Output Amperage 120/240 V, 3 $\phi$ 0.8 pf          | 45             | 60             | 90             | 150            |
| Output Amperage 277/480 V, 3 $\phi$ 0.8 pf          | n/a            | n/a            | 45             | 75             |
| Fuel Consumption @ 1/2 load - gal/hr (L/hr)         | 0.85 (3.22)    | 1.03 (3.9)     | 1.37 (5.19)    | 2.15 (8.14)    |
| Fuel Consumption @ full load - gal/hr (L/hr)        | 1.46 (5.53)    | 1.97 (7.46)    | 2.77 (10.49)   | 3.98 (15.07)   |
| Quiet-Test Mode                                     | Yes            | Yes            | Yes            | Yes            |
| db (A) at exercise                                  | 65             | 65             | 65             | 65             |
| db (A) at normal operating load                     | 70             | 70             | 70             | 70             |
| Enclosure   | Aluminum       | Aluminum       | Aluminum       | Aluminum       |
| Enclosure Color                                     | Bisque         | Bisque         | Bisque         | Bisque         |
| Warranty  | 5 Year Limited | 5 Year Limited | 5 Year Limited | 5 Year Limited |
| Dimensions L" x W" x H" (in)                        | 81 x 31 x 50   | 81 x 31 x 50   | 95 x 35 x 59   | 95 x 35 x 57   |
| Weight (lbs.)                                       | 1528           | 1528           | 1857           | 2197           |
| Standard Tank Size (gallons)                        | 32             | 32             | 57             | 57             |
| Extended Run Tank Size (gallons)                    | 95             | 95             | 132            | n/a            |
| Extended Run Time Tank Dimensions L" x W" x H" (in) | 81 x 31 x 65   | 81x31x65       | 95x35x68       | n/a            |
| Extended Run Time Tank Weight (lbs)                 | 1757           | 1757           | 2070           | n/a            |

\*1 $\phi$

## Transfer Switches

|                 | AMPS      | MODEL  | 240V, 2-POLE PHASE / DESCRIPTION  | RATING   |
|-----------------|-----------|--|---|----------|
| SMART SWITCHES  | 100       | RXSC100A3  | Non-service rated transfer switch   | UL / CUL |
|                 | 100       | RXSW100A3  | Service rated transfer switch   | UL       |
|                 | 150       | RXSW150A3  | Service rated transfer switch   | UL       |
|                 | 200       | RXSC200A3  | Non-service rated transfer switch   | UL / CUL |
|                 | 200       | RXSW200A3  | Service rated transfer switch   | UL       |
|                 | 200       | RXSW200A3F   | 200 amp service rated with integrated load center   | UL       |
|                 | 300       | RTSW300A3  | Service rated transfer switch   | UL       |
|                 | 400       | RTSC400A3  | Non-service rated transfer switch   | UL / CUL |
|                 | 400       | RTSW400A3  | Service rated transfer switch   | UL       |
|                 | 600       | RTSC600A3  | Non-service rated transfer switch   | UL / CUL |
|                 | 800       | RTSC800A3  | Non-service rated transfer switch   | UL / CUL |
| CSA SWITCH      | 100       | RTSE100A3CSA   | CSA approved service-rated  | CSA      |
|                 | 200       | RTSE200A3CSA   | CSA approved service-rated  | CSA      |
| LIMITED CIRCUIT | 50        | RXG10EZA1  | 10 circuit load center, includes all wire, circuit breakers, and conduit for installation, NEMA 1 rated   | UL / CUL |
|                 | 100       | RXG16EZA1  | 16 circuit load center, includes all wire, circuit breakers, and conduit for installation, NEMA 1 rated   | UL / CUL |
|                 | 100       | RXG16EZA3  | 16 circuit load center, expandable to 24 with use of tandem breakers, NEMA 3 rated                        | UL / CUL |
| GENREADY        | 100 / 200 | RXG24SHA1 / RXG42SHA1<br>Whole House SER<br>Transfer Switch<br>and Load Center | 100 Amp NEMA 1 with 24 space, 40 Circuit / 200 Amp NEMA 1 with 42 space, 60 Circuit                       | UL       |
|                 | N/A       | 5447 GenReady<br>EZ Transfer Operator  | EZ Operator install into 5448 to give automatic switch functionality                                      | UL       |
|                 | 200 / 125 | 5449 GenReady with<br>EZ Transfer Operator                                     | 200 Amp, 40 circuit combination electrical panel / transfer switch with the EZ Operator already installed | UL       |
|                 | 200 / 125 | 5454 GenReady with<br>EZ Operator NEMA 3R                                      | 200 Amp, 40 circuit combination electrical panel / transfer switch with the EZ Operator already installed | UL       |
|                 | 200 / 125 | 5453 GenReady with<br>EZ Operator NEMA 3R                                      | 200 Amp, 40 circuit combination electrical panel / transfer switch with the EZ Operator already installed | UL       |

.....

For more information, such as  
FAQ's, visit us online at  
[www.generac.com](http://www.generac.com)

.....

# THE GENERAC PROMISE



\* Built in the USA using domestic and foreign parts.

Generac Power Systems, Inc.  
S45 W29290 Hwy. 59, Waukesha, WI 53189  
1-888-GENERAC (1-888-436-3722)

0200680SBY 04/2018 ©2015 Generac Power Systems, Inc.  
All rights reserved. Specifications are subject to change without notice.



[generac.com](http://generac.com)